



# Western SocialScience

## 2015 Research Highlight Report





# Western SocialScience

Western University's Faculty of Social Science is a centre of research excellence, connecting students and research to the world around them.

## Message from the Dean

This report reflects some of the important and wide-ranging research achievements of the Faculty of Social Science at Western University in 2015.

As well as highlighting some of our publications, we outline the substantial external research funding and awards our faculty was successful in achieving. We are thankful for the support we have received from private donors, nonprofit foundations and government funding agencies. It is this generous support that allows us to achieve our research success.

Social science research has perhaps never been more important. Our world has become increasingly globalized economically, socially and politically. While this has brought great benefits, it has also come with many challenges. Social scientists are uniquely qualified to tackle these challenges.

At Western, we are committed to conducting and disseminating world-class social science research that pushes theory and practice forward. Research also plays an important role in our undergraduate and graduate education.



Research undertaken today becomes the knowledge taught tomorrow.

We plan to build on our research strengths over the coming years. Already a great faculty, our goal is to see Western University become ranked among the very best Social Science research faculties in the world.

Robert Andersen  
Dean, Faculty of Social Science

## The Faculty of Social Science

Our Faculty is the largest on campus, and is one of the largest and most diverse Social Science Faculties in Canada. The Faculty includes eight core departments - Anthropology, Economics, Geography, History, Management and Organizational Studies, Political Science, Psychology, and Sociology - and the interdisciplinary Department of Women's Studies and Feminist Research, which is also part of Arts & Humanities.

Recognized for its research, the quality of its undergraduate teaching, and its innovative graduate programs, Western Social Science has consistently been ranked as one of the Top 100 Social Science faculties in the world by the Higher Education Evaluation and Accreditation Council, the QS Corporation and the Academic Rankings of World Universities.

## 2015 Quick Facts

189

Tenured or Tenure-Track Professors

173

Master's Degrees Conferred

41

PhD Degrees Conferred

10

Canada Research Chairs

Three year, Tri-Council grant history

174 grants

worth a total of

\$20,780,397

## Faculty of Social Science Leadership Team



Jamie Baxter,  
Associate Dean,  
Graduate Studies



Joan Finegan,  
Associate Dean,  
Undergraduate Studies



Margaret McGlynn,  
Associate Dean,  
Faculty and Operations  
(As of January 2017)



Ken McRae,  
Associate Dean,  
Research



Dan Shrubsole  
Associate Dean,  
Faculty and Operations  
(Acting, 2016)



# The Institute for Social and Economic Policy Research

Starting in the fall of 2016, Western’s new *Institute for Social and Economic Policy* will produce world-class research of relevance to social and economic policy to promote economic security and growth.

Using advanced data creation, management, and analytic techniques our research will focus on issues related to educational attainment, poverty, inequality, immigration, diversity, population change, local government and urban affairs, and community development. We will place particular emphasis on policies relevant to Canada and the United States.

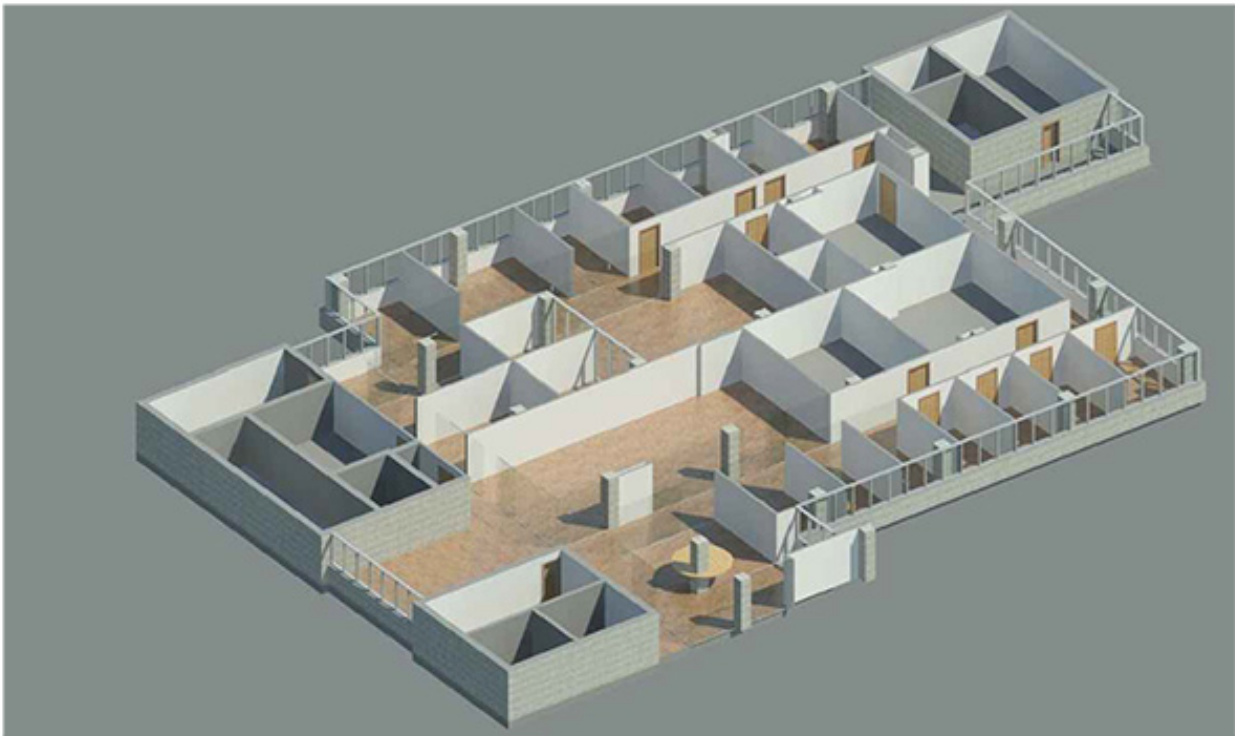
Positioned at the centre of advanced policy research in the Faculty, the Institute will be a knowledge leader—bringing together our best researchers by creating a space to facilitate collaboration and foster synergies between research teams. The Institute will also serve as a resource for information on research and funding opportunities, research, training and additional activities relevant to its members.

A number of the Centres currently in existence within the Faculty of Social Science will function under the umbrella of the Institute:

- Centre for Research on Migration and Ethnic Relations;
- Canada-U.S. Institute;
- Centre for Population, Aging and Health;
- Centre for Human Capital and Productivity; and,
- Statistics Canada Research Data Centre.

Plans also call for the creation of two new centres that will also fall under the Institute’s umbrella:

- Centre for Urban Policy and Local Governance; and,
- National Centre for Research on Poverty and Inequality.



# Research Awards and Distinctions

## Faculty Scholars Award

Established in 2005, the Faculty Scholars Award recognizes significant recent scholarly achievements in teaching or research.

[http://president.uwo.ca/honour\\_roll/faculty/scholars\\_recipients.html](http://president.uwo.ca/honour_roll/faculty/scholars_recipients.html)

## Recent award recipients:

Bipasha Baruah, Women’s Studies & Feminist Research (2016)  
Stefan Everling, Physiology & Pharmacology (2016)  
Jessica Grahm, Psychology (2016)  
Chantelle Richmond, Geography (2016)  
Kim Clark, Anthropology (2015)  
Timothy Conley, Economics (2015)  
Paul Gribble, Psychology (2015)  
Marc Joanisse, Psychology (2014)  
Stefan Kohler, Psychology (2014)  
Elizabeth Hayden, Psychology (2013)

## The Hellmuth Prizes for Achievement in Research

The Hellmuth Prizes for Achievement in Research recognizes and celebrates the research achievements of our most distinguished faculty members.

[http://www.uwo.ca/research/excellence/awards/hellmuth\\_prize.html](http://www.uwo.ca/research/excellence/awards/hellmuth_prize.html)

Bob Young, Political Science (2015)  
Adrian Owen, Psychology (2013)  
John Meyer, Psychology (2012)  
John Whalley, Economics (2009)  
William Fisher, Psychology (2007)  
Mel Goodale, Psychology (2006)  
Joy Parr, Geography (2006)  
Richard Vernon, Political Science (2005)  
Regna Darnell, Anthropology (2000)  
David Laidler, Economics (1999)  
Ian Steele, History (1997)

# The Royal Society of Canada

The Royal Society of Canada (RSC): The Academies of Arts, Humanities and Sciences of Canada was established under an Act of Parliament in 1883 as Canada’s National Academy, the senior collegium of distinguished scholars, artists and scientists in the country. <https://www.rsc-src.ca/>

Fellows of the College of New Scholars, Artists and Scientists represents the emerging generation of scholarly, scientific and artistic leadership in Canada.

## Fellows of the Royal Society:

Jonathan Vance, History (2008)  
Maya Shatzmiller, History (2003)  
Mel Goodale, Psychology (2001)  
Ian Steele, History (1998)  
Regna Darnell, Anthropology (1996)  
Gordon McBean, Geography (1993)  
Joy Parr, Geography (1992)  
John Whalley, Economics (1986)  
Ronald Wonnacott, Economics (1983)  
David Laidler, Economics (1982)  
James Melvin, Economics (1982)  
Allan Paivio, Psychology (1978)  
J.R. Lander, History (1976)  
Grant Reuber, Economics (1972)

Bipasha Baruah, Women’s Studies and Feminist Research (2015)  
Joanna Quinn, Political Science (2015)  
Chantelle Richmond, Geography (2015)  
Daniel Ansari, Psychology (2014)  
Isaac Luginaah, Geography (2014)



# Department of Anthropology

Western Anthropology has research strengths in all four subfields:

- Archaeology;
- Biological Anthropology;
- Linguistic Anthropology; and
- Sociocultural Anthropology.

We offer outstanding research training for graduate students at the MA and PhD levels

In addition to our recognized areas of research strength (Archaeology and Bioarchaeology; Environment, Culture and Political Ecology; and Borders, Identity and Mobility), our faculty are forging new forms of collaborative engagement with research communities and their descendants across all of our subfields.

## 2015 Quick Facts

15

Tenured or Tenure-Track Professors

10

Master's Degrees Conferred

5

PhD Degrees Conferred

Three year Tri-Council grant history

14 grants

worth a total of

\$794,189

## Faculty Members

### Professors

Kim Clark  
Regna Darnell  
Chris Ellis  
Neal Ferris

### Associate Professors

Ian Colquhoun  
Randa Farah  
Tania Granadillo  
Lisa Hodgetts  
Dan Jorgensen  
Jean-Francois Millaire  
Andrew Nelson  
Karen Pennesi  
Adriana Premat  
Andrew Walsh

### Assistant Professors

Sherrie Larkin  
Peter Timmins

### Professors Emeriti

Chet Creider  
Douglass Drozdow-St. Christian  
James Freedman  
Lee Guemple  
El Molto  
Jean-Marc Philibert  
Michael Spence  
Christine White



Professor Kim Clark was named a Faculty Scholar for 2015-17, recognizing significant recent scholarly achievements in teaching or research.

## 2015 Publication Highlights

**Colquhoun, Ian.** (2015) "Community-managed conservation efforts at Tsingy Mahaloka/KOFA-MA, northern Madagascar: Right place at the wrong time?" *Madagascar Conservation and Development* 10(S1): 35-41.

**Darnell, Regna,** Michelle Hamilton, Robert Hancock and Joshua Smith, eds. *Franz Boas as Public Intellectual: Theory, Ethnography, Activism.* Franz Boas Papers: Documentary Edition, volume I (Lincoln: University of Nebraska Press, 2015).

**Ellis, C.J.,** J.R. Keron, J.H. Menzies, S.G. Monckton and A. Stewart. For Immediate Occupancy: Cosy 3000 Year Old Heritage Winter House with River View near Lake Huron -- Apply to Terminal Archaic Realty. In *Building the Past: Studies of Prehistoric Wooden Post Architecture in the Ohio Valley-Great Lakes Region*, edited by Brian G. Redmond and Robert A. Genheimer (Gainesville: University Press of Florida, 2015), pp. 29-62.

**Ferris, Neal** and John Welch. New Worlds: Ethics in Contemporary North American Archaeological Practice. In *Ethics and Archaeological Praxis*, edited by Cristobal Gnecco and Dorothy Lippert (New York: Springer Books, 2015), pp. 69-93.

**Nelson, A.J.** and A.D. Wade. (2015) "IMPACT: Development of a radiological mummy database." *Anatomical Record* 298: 941-948.

**Pennesi, Karen.** (2015) "Constructing 'Farmer' and 'State' Identities in Moral Discourses about Semi-subsistence Agriculture in Northeast Brazil." *Journal of Latin American Studies* 47(4): 781-809.

**Premat, Adriana.** (2015) "Popular Culture, Politics and Alternative Gender Imaginaries in 1960s and 1970s Argentina." *Studies in Latin American Popular Culture* 33: 41-56.

Szpak, P., **J-F. Millaire, C.D. White,** G. Lau, F. Surette, and **F.J. Longstaffe.** (2015) "Origins of Prehispanic Camelid Wool Textiles from the North and Central Coasts of Peru Traced by Carbon and Nitrogen Isotopic Analysis". *Current Anthropology* 56(3): 149-159.

Watson, Amanda and **Dan Jorgensen.** Ringing in change: how mobile phones could aid drought response in PNG. Blogpost for *The Interpreter* of the Lowy Institute for International Policy. Electronic document available at: <http://www.lowyinterpreter.org/post/2015/10/21/Ringing-in-change-how-mobile-phones-could-aid-drought-response-in-PNG.aspx>.

**White, Christine.** Bioarchaeology of Food. In *The Archaeology of Food*, edited by Karen Metheny and Mary Beaudry (Lanham, MD: Rowman and Littlefield, 2015), pp. 48-56.

Only two doctoral programs at Western can claim more Vanier and Trillium Scholarships than the Anthropology doctoral program over the last five years!



Western  
SocialScience



# Department of Economics

The Department of Economics' core areas of research include:

- Macroeconomics;
- International Development;
- Empirical Economics; and,
- Microeconomics.

The Centre for Human Capital and Productivity studies issues and provides policy advice on the subject, with 16 faculty members affiliated with the Centre.

Supported by a \$2-million donation from the Jarislowsky Foundation, the Department has established the Stephen A. Jarislowsky Chair in Central Banking. A search to fill this position will start in 2016.

## 2015 Quick Facts

28

Tenured or Tenure-Track Professors

Degrees Conferred

18

Master in Economics

13

Master of Financial Economics

3

PhD in Economics

Three year grant history

19 grants

worth a total of

\$1,524,476

## Faculty Members

### Professors

Kul Bhatia  
Audra Bowlus  
Rui Castro  
Tim Conley  
Jim Davies  
Silvia Gonçalves  
Lance Lochner  
Chris Robinson  
Terry Sicular  
Todd Stinebrickner  
Charles Zheng

### Associate Professors

C. Alan Bester  
Elizabeth Caucutt  
Tai-Yeong Chung  
Maria Goltsman  
Igor Livshits  
Jim MacGee  
Salvador Navarro  
Gregory Pavlov  
Al Slivinski  
Lars Stentoft  
Peter Streufert

### Assistant Professors

Victor Aguiar  
Simona Cociuba  
Nail Kashaev  
Nirav Mehta  
Joseph Mullins  
Ananth Ramanarayanan  
David Rivers  
Charles Saunders  
Jacob Short

### Professors Emeriti

Ake Blomqvist  
Russ Boyer  
David Burgess  
R.A.L. Carter  
Paul Davenport  
C. Knick Harley  
David Laidler  
J. Clark Leith  
John Palmer  
Michael Parkin  
Arthur Robson  
John Whalley  
Ron Wintrobe  
Ron Wonnacott

## 2015 Publication Highlights

**Castro, R.,** G. L. Clementi, and L. Yoonsoo. (2015) Cross-Sectoral Variation in the Volatility of Plant-Level Idiosyncratic Shocks. *Journal of Industrial Economics* 63(1): 1-29.

**Cociuba, S. E.,** and A. Ueberfeldt. (2015) Heterogeneity and Long-run Changes in Aggregate Hours and the Labor Wedge. *Journal of Economic Dynamics & Control* 52: 75–95.

**Davies, J. B., and A. Slivinski.** (2015) Economic Efficiency of Federal Provision of Scientific Information and Support for Science Research in Canada. *Canadian Public Policy* 41(4): 332-342.

**Gonçalves, S.,** and M. Kaffo. (2015) Bootstrap Inference for Linear Dynamic Panel Data Models with Individual Fixed Effects. *Journal of Econometrics* 186(2): 407-426.

**Livshits, I.** (2015) Recent Developments in Consumer Credit and Default Literature. *Journal of Economic Surveys* 29(4): 594-613.

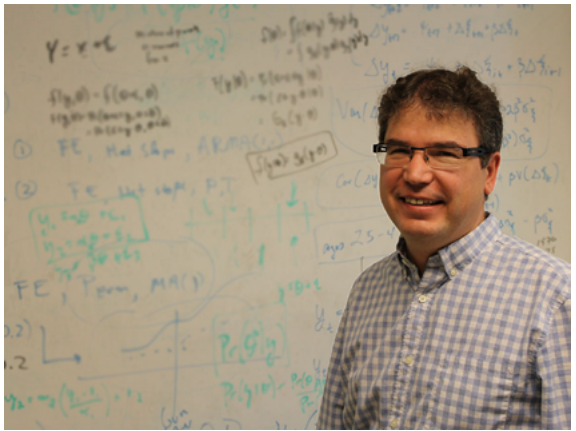
**Lochner, L.,** and E. Moretti. (2015) Estimating and Testing Models with Many Treatment Levels and Limited Instruments. *Review of Economics and Statistics* 97(2): 387-397.

Fielding, D., C. Hajzler, and **J. MacGee.** (2015) Distance, Language, Religion, and the Law of One Price: Evidence from Canada and Nigeria. *Journal of Money, Credit and Banking* 47(5): 1007-1029.

Rombouts, J.V.K., and **L. Stentoft.** (2015) Option Pricing with Asymmetric Heteroskedastic Normal Mixture Models. *International Journal of Forecasting* 31(3): 635-650.

**Streufert, P.** (2015) An Elementary Proof that Additive I-Likelihood Characterizes the Supports of Consistent Assessments. *Journal of Mathematical Economics* 59: 37-46.

Li, C., and **J. Whalley.** (2015) "Chinese Firm and Industry Reactions to Antidumping Initiations and Measures." *Applied Economics* 47(26): 2683-2698.



Lance Lochner is Director of CHCP (Centre for Human Capital and Productivity); and Canada Research Chair in Human Capital and Productivity.

The Department of Economics is celebrating its 50th anniversary in 2016. The Department is among the Top 4 in Canada, based on QS World University Ranking for 2016.



Western  
SocialScience

# Department of Geography

Geography at Western is about making a positive impact on students, as well as making contributions to knowledge and society through its research.

The Department's research is focused on four themes:

- Environment, Development and Health;
- Geographic Information Science;
- Physical Geography; and,
- Urban Studies.

Widespread collaborations have been developed across the campus, in the community, nationally and internationally.

## 2015 Quick Facts

22

Tenured or Tenure-Track Professors

13

Master's Degrees Conferred

8

PhD Degrees Conferred

Three year Tri-Council grant history

47 grants

worth a total of

\$3,905,220

## Faculty Members

### Professors

Peter Ashmore  
Jamie Baxter  
Jason Gilliland  
Milford Green  
Isaac Luginaah  
Jacek Malczewski  
Dan Shrubsole  
Chris Smart  
Jinfei Wang

### Associate Professors

Godwin Arku  
Michael Buzzelli  
Belinda Dodson  
Jeff Hopkins  
Desmond Moser  
Katrina Moser  
Chantelle Richmond  
Graham Smith  
Phil Stooke  
James Voogt  
Tony Weis

### Assistant Professors

Carol Hunsberger  
Adam Yates

### Professors Emeriti

Elaine Bjorklund  
Richard Butler  
Don Cartwright  
Robert Cecil  
Bill Code  
Mireya Folch Serra  
Don Janelle  
Roger King  
Brian Luckman  
Gordon McBean  
Robert McDaniel  
Joy Parr  
Micha Pazner

## 2015 Publication Highlights

**Arku, G.** & Oosterbaan, C.1 (2015) "Evidence of Inter-Territorial Collaborative Economic Development Strategies in Ontario, Canada." *GeoJournal*. 80(3): 361-374.

**Baxter, J.**, Ouellette, D., Walker, C. (2015) "Adding Insult to Injury: Psychosocial stress in Ontario wind turbine communities," *Social Science & Medicine*, 133, 358-365.

Bennett, S., **Ashmore, P.**, McKenna-Neuman, C.(2015) "Transformative geomorphic research using laboratory experimentation." *Geomorphology*, 244, 1-8. doi:10.1016/j.geomorph.2014.11.002

Goebel, A. and **Dodson, B.** (2015) 'Assessing the state's response: Housing policy and female-headed households'. Chapter in Goebel, Allison, *On Their Own: Women, Urbanization and the Right to the City in South Africa*. Montreal and Kingston: McGill-Queen's University Press.

Huang, X., **Wang, J.** & Shang, J. (2015). An Integrated Surface Parameter Inversion Scheme Over Agricultural Fields At Early Growing Stages By Means Of C-Band Polarimetric RADARSAT-2 Imagery. *IEEE Transactions on Geoscience and Remote Sensing*. 54(5), 2510-2528.

**Hunsberger, C.** (2015) "Learning from the failures of biofuels governance." *Canadian Food Studies* 2(2): 304-312.

**Malczewski J.** and Rinner, C. (2015) *Multicriteria Analysis in Geographic Information Science* New York: Springer.

Oiamo, T., **Baxter, J.**, Grgicak-Mannion, A., Xu, X., & **Luginaah, I.** (2015). Place effects on noise annoyance: Cumulative exposures, odour annoyance and noise sensitivity as mediators of environmental context. *Atmospheric Environment*, 116, 183-193.

**Weis, T.** (2015) "Meatification and the madness of the doubling narrative." *Canadian Food Studies*, 2(2), 296-303.



In 2015, Chantelle Richmond was awarded the Julian M. Szeicz Award from the Canadian Association of Geographers, in recognition for her early research excellence, and was elected a Member of the Royal Society of Canada's College of New Scholars.

The Department of Geography is one of Canada's oldest Geography departments starting with the hiring of Edward G. Pleva in 1938 in the Geology and Geography Department.



Western  
SocialScience



# Department of History

Innovative and multi-faceted research is central to the academic mission of the Department of History. Research activity is captured by the following themes:

- Conflict and Society;
- International, Transnational and Global History;
- Public and Digital History;
- Environmental, Health and Technology;
- Business and Economy;
- Politics, Law and Governance; and,
- Culture and Society, Social History, and Gender.

Our research output is not limited to traditional media; faculty members are developing public history sites, contributing to digital media, building research collections, and pioneering new methodologies.

# 2015 Quick Facts

28

Tenured or Tenure-Track Professors

35

Master's Degrees Conferred

5

PhD Degrees Conferred

Three year Tri-council grant history:

4 grants

worth a total of

\$208,267

# 2015 Publication Highlights

**Marta Dyczok**, ed. with Brogi, Giovanna, Oxana Pachlovska and Giovanna Siedina, *Ukraine Twenty Years After Independence: Assessments, Perspectives, Challenges* (Rome: Aracne, 2015)

**Keith Fleming**, “The world is our parish”: John King Gordon, 1900-1989: *An Intellectual Biography* (Toronto: University of Toronto Press, 2015)

**Monda Halpern**, *Alice in Shandehland: Scandal and Scorn in the Edelson/Horwitz Murder Case* (Montreal: McGill-Queen’s University Press, 2015)

**Michelle Hamilton**, ed. with Regna Darnell, Robert Hancock and Joshua Smith, *Franz Boas as Public Intellectual: Theory, Ethnography, Activism* (Lincoln: University of Nebraska Press, 2015)

**Shelley MacKellar**, “Disruptive Potential: The ‘Landmark’ REMATCH Trial, Left Ventricular Assist Device (LVAD) Technology and the Surgical Treatment of Heart Failure in the United States,” in *Surgical Alternatives: The Uses and Transformations of Surgical Technology*, ed. Thomas Schlich and Christopher Crenner (Rochester: University of Rochester Press, 2016)

**Brock Millman**, *Polarity, Patriotism, and Dissent in Great War Canada, 1914-1919* (Toronto: University of Toronto Press, 2016)

Marina Soroka and **Charles A. Ruud**, *Becoming a Romanov: Grand Duchess Elena of Russia and her World* (Farnham: Ashgate, 2015)

**Frank Schumacher**, “Anspruch und Wirklichkeit in Geschichte und Gegenwart der Aussenkulturpolitik der USA”, in *Kultur und Aussenpolitik. Handbuch fuer Studium und Praxis*, ed. Kurt-Juergen Maass (Baden-Baden: Nomos Verlag, 2015)

**Jeff Vacante**, (2016) “The Decline of Hugh MacLennan,” *University of Toronto Quarterly* 85(1): 43-68.

**Jonathan F. Vance**, ‘A Moment’s Perfection,’ in *In Flanders Fields, 100 Years: Writing on War, Loss and Remembrance*, ed. Amanda Betts (Toronto: Knopf Canada, 2015)



Rob MacDougall (pictured), and William Turkel received a four-year SSHRC Insight Grant (\$121,060) for the project “The Golden Age of Cranks: Communication Networks and Heterodox Ideas in 19th-century North America.”

Faculty Members		
<b>Professor</b>		
David Bellhouse	Allyson May	Cary Takagaki
Alan MacEachern	Margaret McGlynn	Jeffery Vacante
Francine McKenzie	Shelley McKellar	
Brock Millman	Katherine McKenna	
Maya Shatzmiller	Eli Nathans	
William Turkel	Nancy Rhoden	
Jonathan Vance	Frank Schumacher	
Robert Wardhaugh	Aldona Sendzikas	
	Carl Young	
	<b>Assistant Professor</b>	
	William Acres	
	Timothy Compeau	
	Michael Dove	
	Andrew Iarocci	
	Eona Karakacili	
	Peter Krats	
	Barbara Murison	
	Karen Priestman	
	Laurel Shire	
	Don Spanner	
	Geoffrey Stewart	
		<b>Professors Emeriti</b>
		Donald Avery
		Roger Emerson
		George Emery
		David Flaherty
		Tom Guinsurg
		Roger Hall
		Erich Hahn
		Margaret Kellow
		Rodney Millard
		Peter Neary
		Pierre Reynard
		Charles Ruud
		Thomas Sea
		Craig Simpson
		Isao Soranaka
		Ian Steele
		Neville Thompson

In February 2016, the Lieutenant Governor’s Ontario Heritage Award for Excellence in Conservation was awarded to our Public History class for their book, *This Hour of Trial and Sorrow: The Great War Letters of the Leonard Family*.



# Department of Management and Organizational Studies

The Department of Management and Organizational Studies provides a unique interdisciplinary approach to management research, emphasizing the social science and evidence-based foundations.

Faculty members are actively engaged in research across two main research clusters:

- Consumer and Organizational Behavior; and,
- Corporate Governance.

Researchers in Consumer and Organizational Behavior focus on the study of human behavior in consumption and organizational contexts. Research expertise in this area includes examining globalization, culture, and consumption, social influence, and sustainability.

Researchers in the Corporate Governance cluster study the systems, processes, structures, and frameworks used to control and direct any corporation in the best interests of all stakeholders. They examine internal and external mechanisms of corporate governance, corporate social responsibility, citizenship in the workplace, and leadership.

## Faculty Members

### Professors

Mitch Rothstein  
Julie Aitken Schermer

### Associate Professors

Daniel Brou  
Mark Cleveland  
Diana Mok  
Shahbaz Sheikh  
Johanna Weststar

### Assistant Professors

Wonkyong (Beth) Lee  
Jennifer Robertson  
Bonnie Simpson  
Jun Wang

## 2015 Publication Highlights

**Cleveland, Mark;** Laroche, Michel & Papadopoulos, Nicolas (2015), "You Are What You Speak? Globalization, Multilingualism, Consumer Dispositions, and Consumption," *Journal of Business Research*, 68(3) 542-552.

Dimitrova, D., **Mok, Diana**, and Wellman, B. (2015) Changing ties in a far-flung, multidisciplinary research network: The case of GRAND. *American Behavioral Scientist*, 59(5), 599–616.

Dewhirst, T., **Lee, W.B.**, Fong, G.T., & Ling, P.M. (2015) Exporting an Inherently Harmful Product: The Marketing of Virginia Slims Cigarettes in the United States, Japan, and Korea. *Journal of Business Ethics*.

**Robertson, J.L.**, & Barling, J. (Eds.). (2015). *The Psychology of Green Organizations*. New York: Oxford University Press.

**Schermer, J. A.** & Vernon, P. A. (2015). Phenotypic, genetic, and environmental correlations between reaction times and intelligence in young twin children. *Journal of Intelligence*, 3, 160-167.

Chakraborty, A. and **Sheikh, Shahbaz** (2015), "The pressure to perform: option compensation and forced CEO turnover." *International Journal of Business*. 20(4), 308-325.

Lee, B., Wang, J. & **Weststar, J.** (2015). Work hour congruence: The effect on job satisfaction and absenteeism. *International Journal of Human Resource Management*, 26(5), 657-675.



Johanna Weststar received \$32,000 from the International Game Developers Association in an academic-industry partnership to track and report on quality of life and working conditions in the global video game industry.

## 2015 Quick Facts

12

Tenured or Tenure-Track Professors

Three year Tri-council grant history:

6 grants

worth a total of

\$177,349

Research by Management and Organizational Studies faculty has featured in articles in The Guardian, Venture Beat, The New York Times and other media outlets.



Western  
SocialScience



# Department of Political Science

Western Political Science faculty engage in research in all of the traditional subfields of political science, including: Canadian politics; comparative politics; international relations; local government; political theory; and public administration. The Department is formally involved research in several interdisciplinary programs or centres.

Western Political Science has three signature research areas:

- Global Justice;
- Multilevel Governance; and,
- Democratic Engagement.

## 2015 Quick Facts

20

Tenured or Tenure-Track Professors

Degrees Conferred

17

Master in Political Science

19

Master in Public Administration

3

PhD in Political Science

Three year Tri-Council grant history

4 grants

worth a total of

\$271,252

## Faculty Members

### Professor

Don Abelson  
Robert Andersen  
Andrés Pérez-Baltodano  
Andrew Sancton  
Richard Vernon

### Associate Professor

Christopher Alcantara  
Cameron Anderson  
Nandita Biswas Mellamphy  
Cristine De Clercy  
Caroline Dick  
Radoslav Dimitrov  
Marta Dyczok  
Adam Harmes  
Martin Horak  
Charles Jones  
Salim Mansur  
Joanna Quinn  
Erika Simpson  
Laura Stephenson

### Assistant Professor

Dan Bousfield  
Peter Ferguson  
Robert Leone  
Joseph Lyons  
Zack Taylor

### Professors Emeriti

Carol Agocs  
John Cartwright  
Kym Kymlicka  
Doug Long  
Allan McDougall  
Robert Melvin  
Sid Noel  
Elizabeth Riddell-Dixon  
Veronica Schild  
Denis Smith  
Peter Suttie  
Martin Westmacott  
Robert Young

## 2015 Publication Highlights

Jason Roy and **Christopher Alcantara**. (2015) "The Candidate Effect: Does the Local Candidate Matter?" *Journal of Elections, Public Opinion and Parties*. 25(2): 195-214.

Sealey, Anthony and **Robert Andersen** (2015) "The Impact of Income Inequality on Popular Support for Redistributive Policies in Canada, 1993-2008," *Canadian Public Policy/Analyse de Politiques*, 41(1): 51-64.

**Anderson, Cameron** and Michael McGregor. (2015) "Economic Attitudes and Political Identities: Evidence from Canada." *International Journal of Public Opinion Research*, 27(3): 361-382.

**Biswas Mellamphy, Nandita** and Dan Mellamphy, (2015) "The Critique of Transcendental Miserablism". *Parrhesia: The Journal of Critical Philosophy*, 22: 131-143.

Clarence Stone, Robert Stoker, John Betancur, Susan Clarke, Marilyn Dantico, **Martin Horak**, Karen Mossberger, Juliet Musso, Jeffrey Sellers, Ellen Shiau, Harold Wolman, and Donn Worgs. *Urban Neighborhoods in a New Era: Revitalization Politics in the Postindustrial City*. Chicago: University of Chicago Press, 2015.

**Lyons, Joseph**. (2015.) "Local Government Structure and the Co-ordination of Economic Development Policy." *Canadian Journal of Political Science* 48(1): 173-93.

**Quinn, Joanna**. (2015) "The Impact of Internal Conflict on Customary Institutions and Law: The Case of Uganda," *Journal of African Law*, 59(2): 220-236.

**Sancton, Andrew** and Chen Zhenming. *Citizen Participation at the Local Level in China and Canada*. CRC Press, 2015.

William P. Cross, Jonathon Malloy, Tamara A. Small and **Stephenson, Laura**. *Fighting for Votes: Parties, the Media, and Voters in an Ontario Election*. UBC Press, 2015.

Hannan, Sarah, Samantha Brennan, and **Richard Vernon**. *Permissible Progeny: The Morality of Procreation and Parenting*. Oxford University Press, 2015.



Joanna Quinn was named a member of The College of New Scholars, Artists and Scientists, Royal Society of Canada, 2015 – 2022.

In 2015, the Department welcomed two new faculty members, Christopher Alcantara and Zack Taylor. In January 2017, Dave Armstrong will also join the Department.



Western  
SocialScience

# Department of Psychology

The Psychology department is one of the most distinguished departments at Western. It is housed in the Social Science Centre, Westminster Hall, Natural Science Centre, and the Advanced Facility for Avian Research.

Psychology at Western is organized around four clusters of research excellence:

- Cognitive, Developmental, and Brain Sciences (CDB);
- Social and Personality Psychology (SPP);
- Industrial / Organizational Psychology (I/O); and,
- Clinical Science and Psychopathology (CSP).

The Department will search for four new faculty members in the areas of Social and I/O in 2016.

# 2015 Quick Facts

44

Tenured or Tenure-Track Professors

25

Master's Degrees Conferred

12

PhD Degrees Conferred

Three year Tri-Council grant history

70 grants

worth a total of

\$12,976,232

# 2015 Publication Highlights

Lyons, I.M., Nuerk, H.C. & **Ansari, D** (2015) Rethinking the implications of numerical ratio effects for understanding the development of representational precision and numerical processing across formats. *Journal of Experimental Psychology: General*, 144, 1021-35.

Stanton, S. C., **Campbell, L.**, & Loving, T. J. (2014). Energized by love: Thinking about romantic relationships increases positive affect and blood glucose levels. *Psychophysiology*, 51(10), 990-995.

McDermott, R. & **Dozois, D. J. A.** (2015). The causal role of attentional bias in a cognitive component of depression. *Journal of Experimental Psychopathology*, 6(4), 1-13.

**Esses, V.M.**, Bennett-AbuAyyash, C., & Lapshina, N. (2014). How discrimination against ethnic and religious minorities contributes to the underutilization of immigrants' skills. *Policy Insights from Behavioral and Brain Sciences*, 1, 55-62.

Snow, J. C., **Goodale, M. A.**, & **Culham, J. C.** (2015). Preserved haptic shape processing after bilateral LOC lesions. *Journal of Neuroscience*, 35(40), 13745-13760.

Leow, L. A., Rinchon, C., & **Grahn, J.** (2015). Familiarity with music increases walking speed in rhythmic auditory cuing. *Annals of the New York Academy of Sciences*, 1337(1), 53-61.

McGregor, H. R., & **Gribble, P. L.** (2015). Changes in visual and sensory-motor resting-state functional connectivity support motor learning by observing. *Journal of Neurophysiology*, 114(1), 677-688.

Farrell, T. M., Neuert, M. A., Cui, A., & **MacDougall-Shackleton, S. A.** (2015). Developmental stress impairs a female songbird's behavioural and neural response to a sexually selected signal. *Animal Behaviour*, 102, 157-167.

Kam, C., & **Meyer, J.P.** (2015). How careless responding and acquiescence response bias can influence construct dimensionality: The case of job satisfaction. *Organizational Research Methods*, 18, 512-541.

Rabi, R. R., Miles, S. J. & **Minda, J. P.** (2015). Learning categories via rules and similarity: comparing adults and children. *Journal of Experimental Child Psychology*, 131, 149-169.

Naci, L., Sinai, L., & **Owen, A.M.** (2015) Detecting and interpreting conscious experiences in behaviorally non-responsive patients. *NeuroImage*, 2015.11.059.



Professor Daniel Ansari is Canada Research Chair in Developmental Cognitive Neuroscience and in 2015 was named a Fellow of The Association of Psychological Science.

## Faculty Members

### Professor

Natalie Allen  
Daniel Ansari  
Lorne Campbell  
Jody Culham  
David Dozois  
Victoria Esses  
William Fisher  
Richard Goffin  
Mel Goodale  
Paul Gribble  
Elizabeth Hampson  
Elizabeth Hayden  
Debra Jared  
Marc Joanisse  
Ingrid Johnsrude  
Albert Katz  
Martin Kavaliers  
Stefan Köhler  
Nicholas Kuiper  
Steve Lomber  
Steve Lupker  
Scott MacDougall-Shackleton  
Ken McRae

John Meyer  
Jim Neufeld  
James Olson  
Klaus-Peter Ossenkopp  
Adrian Owen  
Don Saklofske  
David Sherry

### Associate Professor

Mike Atkinson  
Brian Corneil  
Rhodri Cusack  
Joan Finegan  
Paul Frewen  
Jessica Grahn  
Erin Heerey  
Riley Hinson  
Peter Hoaken  
Paul Minda  
Bruce Morton  
Graham Reid  
Leora Swartzman  
Lynne Zarbatany

### Assistant Professor

Adam Cohen  
Derrick MacFabe  
Andrew Pruszyński  
Ryan Stevenson

### Professors Emeriti

Peter Cain  
Peter Denny  
Robert Gardner  
Rod Martin  
Greg Moran  
Harry Murray  
David Pederson  
Susan Pepper  
William Roberts  
Gary Rollman  
Clive Seligman  
Marvin Simner  
Richard Sorrentino  
Philip Vernon  
Brian Timney

The Psychology Department at Western was founded in 1948. It is among the best in the world, ranked 36th in the 2016 QS World University Rankings.



Western  
SocialScience



# Department of Sociology

Sociology's award winning researchers lead in the study of population dynamics and social inequality, under which these areas fall:

- Aging and the Life Course;
- Health and Health Inequality;
- Inequality, Power, and Social Regulation;
- Social Demography and Migration; and,
- Work, Occupations, and Professions.

The Institute of Social and Economic Policy will launch in 2016, with considerable research input provided by faculty from Sociology.

## 2015 Quick Facts

18

Tenured or Tenure-Track Professors

13

Master's Degrees Conferred

3

PhD Degrees Conferred

Three year, Tri-Council grant history

10 grants

worth a total of

\$923,411

## Faculty Members

### Professors

Tracey Adams  
Anton Allahar  
Robert Andersen  
Ingrid Arnet Connidis  
James Côté  
Michael Gardiner  
Warren Hewitt (on leave)  
Anders Holm  
Julie McMullin  
Jerry White

### Associate Professors

Teresa Abada  
Lorraine Davies  
Michael Haan  
Laura Huey  
Charles Levine  
Wolfgang Lehmann  
Paul-Philippe Paré  
Anabel Quan-Haase  
Scott Schaffer  
Kim Shuey  
Andrea Willson

### Assistant Professors

Dale Ballucci  
Kate Choi  
Rachel Margolis

### Professors Emeriti

William R. Avison  
T.R. Balakrishnan  
Roderic P. Beaujot  
Thomas K. Burch  
Michael Carroll  
Samuel Clark  
G. Edward Ebanks  
Rajulton Fernando  
Ed Grabb  
Carl F. Grindstaff  
Paul Maxim  
Kevin McQuillan  
B. Gail Perry  
James W. Rinehart  
Paul C. Whitehead

## 2015 Publication Highlights

**Abada, Teresa.** (2015) "Impact of Remittance Behaviour on Immigrant Housing Ownership Trajectories: An Analysis of the Longitudinal Survey of Immigrants in Canada from 2001-2005" (with V.Z. Kuuire, G. Arku, I. Luginaah and M. Buzzelli) *Social Indicators Research*. (published online).

**Adams, Tracey L.** (2015) "Sociology of Professions: Debates and Divergences." *Work, Employment and Society* 29(1): 154-165.

**Choi, Kate H.,** Amy Hsin, Sara S. McLanahan. (2015) "Asian Mothers and Children's Verbal Development in Australia and the United States". *Social Science Research* 52:389-407.

**Connidis, Ingrid Arnet.** (2015) "Exploring Ambivalence in Family Ties: Progress and Prospects." *Journal of Marriage and Family*, 77:1:77-95.DOI:10.1111/jomf.12150.

**Davies, L.,** M. Ford-Gilboe, **A. Willson,** C. Varcoe, J. Wuest, J. Campbell, K. Scott-Storey. (2015) "Patterns of Cumulative Abuse Among Female Survivors of Intimate Partner Violence: Links to Women's Socioeconomic Status." *Violence Against Women*, 21:30-48.

Nhan, Johnny, **Laura Huey** and Ryan Broll. Accepted. "Digilantism: An Analysis of Crowdsourcing and the Boston Marathon Bombings." *British Journal of Criminology*. Advance access: <http://bjc.oxfordjournals.org/content/early/2015/12/06/bjc.azv118.abstract>.

**Lehmann, Wolfgang** and Alison Taylor (2015). "On the Role of Habitus in Apprenticeships." *Work, Employment and Society*. Online First Publication: DOI: 10.1177/0950017014564616.

Daw, Jonathan, **Rachel Margolis**, and Ashton M. Verdery. (2015) "Siblings, Friends, Course-mates, Club-mates: How Adolescent Health Behavior Homophily Varies by Race, Class, Gender, and Health Status." *Social Science & Medicine* 125:32-39. <http://dx.doi.org/10.1016/j.socscimed.2014.02.047>.

**Quan-Haase, A.** Suarez, J.L. & Brown, D. (2015) "Collaboration, connecting, and clustering in the humanities: A case study of networked scholarship in an interdisciplinary, dispersed team." *American Behavioral Scientist*, 59(4).

Yule, Carolyn, **Paul-Philippe Paré**, and Rosemary Gartner. (2015) "An examination of the local life circumstances of female offenders: Mothering, illegal earnings and drug use." *British Journal of Criminology* 55: 248-269.



Michael Haan was named Canada Research Chair in Migration and Ethnic Relations in 2015. Haan uses 'big data' to understand how people respond to changes in industry.

The Department of Sociology is celebrating its 50th anniversary in 2016. In 2016, the Department of Sociology will be hiring four faculty members in the general area of population dynamics and inequality.



Western  
SocialScience

# Department of Women's Studies and Feminist Research

Faculty members in Women's Studies and Feminist Research are engaged in interdisciplinary research that spans Social Science and Arts and Humanities and is focused on issues of social justice and equity.

Key areas of research include: global women's issues; sexuality studies; and feminist theory. Researchers draw on disciplines such as: history; sociology; law; cultural studies; feminist critical health studies; critical race studies; sexuality studies; research on violence against women and children; literature; philosophy; First Nations Studies; and film studies.

## 2015 Quick Facts

7

## Tenured or Tenure-Track Professors

7

## Master's Degrees Conferred

1

## PhD Degrees Conferred

Three year Tri-Council grant history      worth a total of

4 grants

\$314,736

## Faculty Members

## Full Appointments in WSFR

## Professor

Samantha Brennan

**Associate Professor**

Bipasha Baruah  
Erica Lawson  
Wendy Pearson  
Kim Verwaayen

## Joint Appointments

## Professor

Tracy Isaacs (Philosophy)  
Chris Roulston (French)

**Associate Professor**

Helen Fielding (Philosophy)  
Susan Knabe (FIMS)  
Katherine McKenna (History)  
Jessica Polzer (Faculty of  
Health Sciences)

## Assistant Professor

Miranda Green-Barteet (Writing)

## 2015 Publication Highlights

**Andrea Allen** (2015) *Violence and Desire in Brazilian Lesbian Relationships*, New York: Palgrave MacMillan.

**Bipasha Baruah** (2015) Creating Opportunities for Women in the Renewable Energy Sector: Findings from India. *Feminist Economics* 21(2): 53-76.

**Baruah, Bipasha** (2015) NGOs as intermediaries in post-disaster rural reconstruction: findings from research in India. *Development in Practice* 25(7): 1–14.

**Samantha Brennan** and Bill Cameron (2015) "How Many Parents Can a Child Have? Philosophical Reflections on the 'Three Parent Case,'" *Dialogue*, 54: 45-61. doi:10.1017/S0012217314000705.

Sarah Hannan, **Samantha Brennan**, and Richard Vernon, *Permissible Progeny? Moral Considerations and Procreative Choice*, Oxford University Press, 2015.

**Helen Fielding**, (2015) "Cultivating Perception: Phenomenological Encounters with Artworks", *Signs: Symposium on "Politics of the Sensing Subject: Gender, Perception, Art,"* Anne Keefe (ed). 40(2): 280-289.

Sanford, S., **Polzer, J.**, & McDonough, P. (2015). Preparedness as a technology of (in)security: Pandemic influenza planning and the global biopolitics of emerging infectious disease. *Social Theory & Health*. Advanced Online Publication. 27 May 015;doi:10.1057/sth.2015.8.



Bipasha Baruah was named to the Royal Society of Canada (RSC) College of New Scholars, Artists and Scientists, 2015-2022.

Women's Studies is a dynamic and interdisciplinary field that focuses on issues of social justice and equality.



# Western SocialScience





# Western SocialScience

Dean's Office  
Social Science Centre  
Room 9438  
Western University  
London, Ontario, Canada

[www.ssc.uwo.ca](http://www.ssc.uwo.ca)

